

2024 Ladies Golf Committee



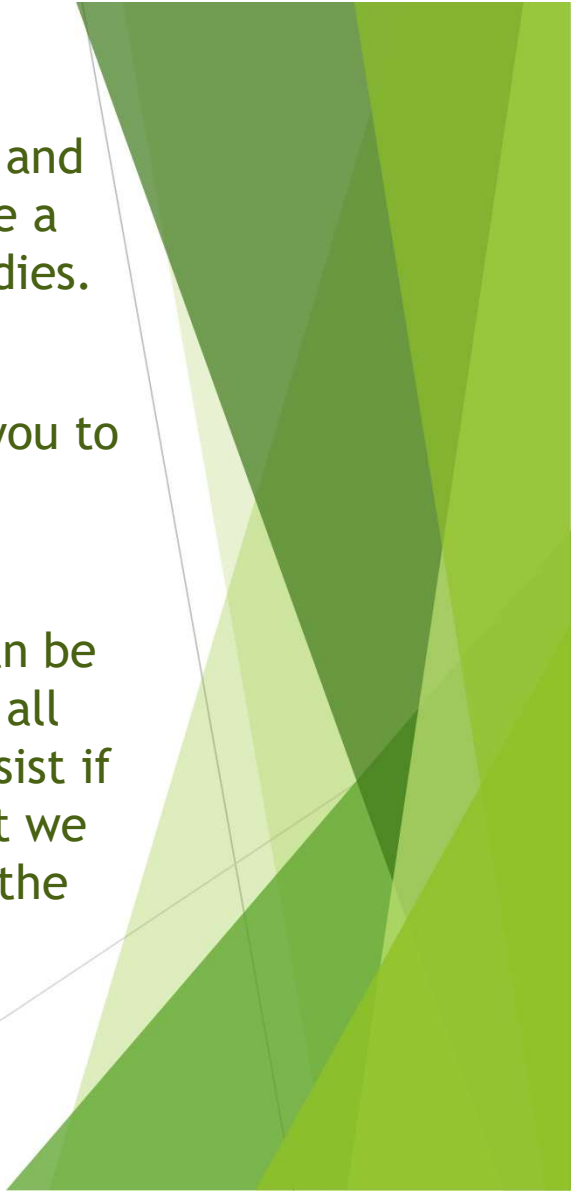
Co-Chairs Val Curtis & Joan Hurst

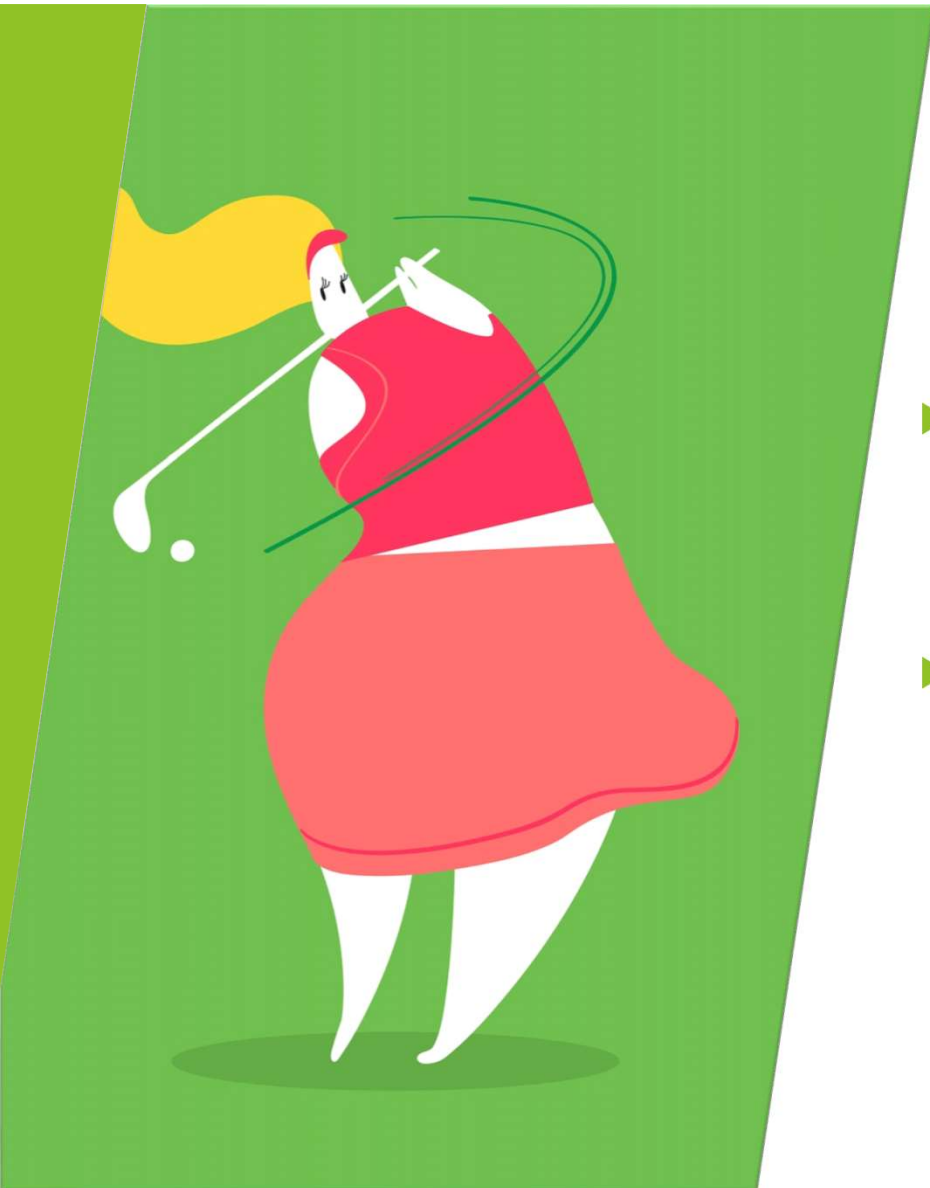
Committee Members

- ▶ Ruth Ross
- ▶ Ulrike Long
- ▶ Lori Wall
- ▶ Cathy Hutchinson
- ▶ Carla Roberts
- ▶ Twila Hitchcock



The Rules

- 
- ▶ You may be new to golf, maybe you have only played casually and your friend or husband doesn't care if you kick the ball or take a mulligan or maybe you are stepping up from Tuesday Night Ladies.
 - ▶ You have decided to play with the Ladies and now they want you to play by the rules!!! So many rules!!!
 - ▶ The rules keep the competitions fair to everybody but they can be overwhelming. Trust me, many long time players do not know all the rules! The ladies in your group will always be willing to assist if you find yourself in a situation and unsure of your options, but we are hoping that this presentation may provide an overview of the rules in some common trouble situations.



The Whiff

- ▶ You have taken your practice swing, you address the ball, swing for all your worth and MISS the ball!!
- ▶ Sorry, but the whiff counts as a stroke and you must include that miss in the score for the hole



The Gimme

- ▶ Your ball is only 10” from the hole and your friend says “that’s a gimme, you can have that” It is not a complete gift.... You still have to add that one stroke to your score.
- ▶ The gimme is sometimes used in casual play to speed up the game. It is permitted to give a putt in **Match Play** if the opposing player/team wishes to do so.
- ▶ **BUT.....in Stroke Play**, you must play until the ball is holed out, even that little 2” putt.... And sometimes they can miss!!!

Provisional Ball

- ▶ You think you hit ball your ball into the woods, but you are not sure ...picture #3 or #13.
- ▶ The rule for a lost ball or for a ball that is “out of bounds” (beyond the white stakes) is to come back and hit again from the same place. To save time, you can declare “I am going to hit a provisional” Declare the kind of ball you are hitting and it must be different from the original ball.
- ▶ You may continue playing the provisional ball until you reach the point to search for your first ball. If you find your ball, you must continue with that ball. If the ball is lost or out of bounds, continue with the provisional ball and add a 2 stroke penalty to your score for the hole (think one stroke into the woods and one stroke to come back to the same spot to hit again).
- ▶ Rule changes in 2019 permit a local rule to speed up play in casual rounds. You may drop the ball at the nearest point on the fairway to where you think your ball entered the woods, no nearer the hole and add 2 strokes to your score for the hole
- ▶ Only 3 minutes permitted to search for a lost ball!

Unplayable Lies



- ▶ You hit your ball into the woods on the left side of #8 and it has landed on a root!! It will be impossible to hit your next shot without hurting yourself or your club. Unfortunately, the rules don't allow you to move it to a better spot without penalty.
- ▶ You may declare a ball unplayable anywhere on the course and you may take a one stroke penalty with the following options:
 1. You may drop the ball within two clubs no nearer the hole.
 2. You may play a ball from the spot from which the original ball was last hit.
 3. You may drop a ball behind the point where the ball lies, keeping that point directly between the hole and the spot on which the ball is dropped, with no limit to how far behind that point the ball may be dropped. (This option means you would be playing your ball from #5 fairway) See diagram!

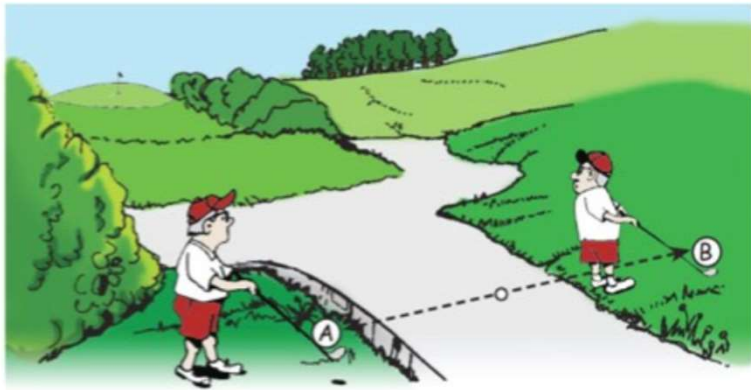


You may even declare an unplayable lie in a bunker if it looks an impossible shot for you!! It is not uncommon for a player to need to take unplayable ball relief in a bunker, such as when the ball is very close to the bunker wall or lip.

- ▶ For one penalty stroke, you may take relief by dropping the ball in the bunker within two club lengths no nearer the hole.
- ▶ For two penalty strokes, you may drop the ball outside the bunker on a line from the hole and your ball in the bunker. (Note that the line is always from the HOLE and not from the tee) You may go back on the line as far as you wish.

Taking Relief from the Cart Path

Finding Nearest Point Of Relief



In this example the ball lies nearer to the right side of the path however the nearest point of relief is clearly on the left side i.e. the ball needs to be moved less to point "A" than to point "B".

- ▶ Your ball has landed on the cart path. On which side do you drop your ball? Many people think it is the side the ball is closest to, but that is not always the case!
- ▶ Take your stance and place a tee in the ground where the club head lies (no nearer the hole).
- ▶ Do the same thing on the other side of the cart path.
- ▶ Measure the distance from your ball on the cart path to each tee and the shortest distance is your nearest point of relief.
- ▶ You may drop your ball within a club length of that spot, no nearer the hole.



DROP ZONE WITHIN ONE CLUB-LENGTH FROM THE NEAREST POINT OF RELIEF, NO NEARER THE HOLE.

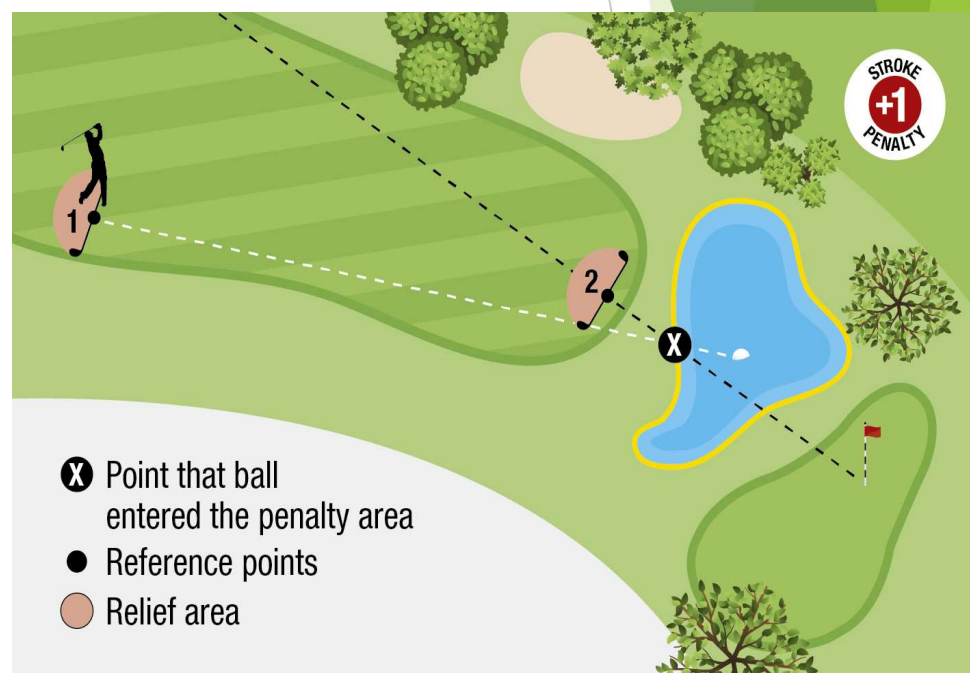


● NEAREST POINT OF RELIEF FOR **RIGHT-HANDED** PLAYER ● NEAREST POINT FOR **LEFT-HANDED** PLAYER

- You hit your ball into the #7 pond!! Now what??
1. You can play another ball from the same place that you hit your ball in the water.
 2. You can take back-on-the-line relief by dropping the original ball or another ball in a relief area based on a reference line going straight back from the hole through point X. (the point where the ball last crossed the edge of the yellow penalty area). There is no limit on how far back on the line the reference point may be.

Take one penalty stroke. (If you put your second shot in the pond, think 2 in, 3 out, so hitting 4th shot).

Yellow Penalty Area “The Pond”



Lateral Penalty Area Marked With Red Stakes

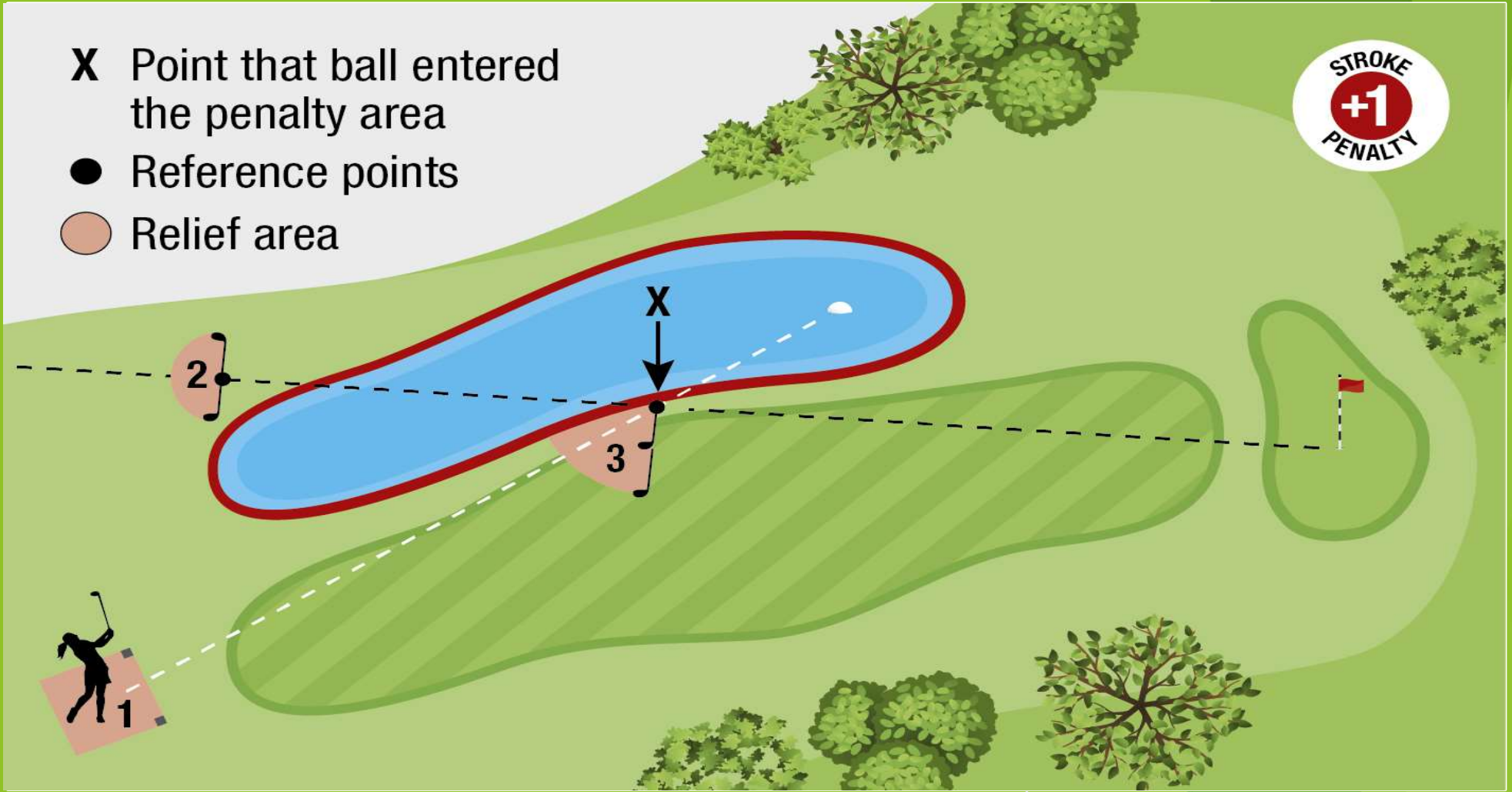
When it is known or virtually certain that a ball is in a red penalty area and the player wishes to take relief, the player has three options, each for one penalty stroke:

1. The player may take stroke-and-distance relief (see point (1) in following diagram).
2. The player may take back-on-the-line relief (see point (2) in following diagram).
3. The player may take lateral relief (red penalty area only). The reference point for taking lateral relief is point X, which is the estimated point where the original ball last crossed the edge of the red penalty area. The relief area is two club-lengths from the reference point, is not nearer to the hole than the reference point and may be in any area of the course, except the same penalty area.

X Point that ball entered the penalty area

● Reference points

○ Relief area



Taking Relief



Remember that free relief is one club length, and two club lengths when you take a penalty.

- ▶ You are entitled to free relief if your ball has landed on a sprinkler head, ground under repair (such as the areas at the bottom of #10), abnormal course conditions such as tire ruts or temporary water.
- ▶ You may drop the ball within one club length of the nearest point of relief, not closer to the hole.
- ▶ Remember to drop the ball from knee height!
- ▶ Local rule: Relief may be taken from exposed rock in the fairway if the rock interferes with the lie of your ball, stance or swing.

See You on
the Course!!!

